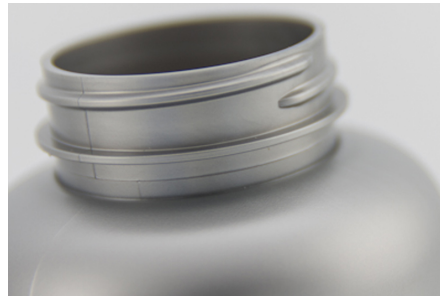



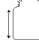
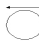






## Data sheet

Series Round  
Version 22\_265\_EN  
Date 01.07.2022



 ARTICLE	 VOLUME	 HEIGHT	 ETIKETT	 DIA TOTAL	 DIA OPENING	 WEIGHT / TSD	 QUANTITY / KRT	 QUANTITY / PAL
330081	75 ml	84 mm	57 mm	45 mm	33 mm	16.00 kg	8.670	8.670
330101	100 ml	88 mm	56 mm	47 mm	33 mm	16.00 kg	7.168	7.168
330121	120 ml	95 mm	64 mm	49 mm	33 mm	19.00 kg	6.720	6.720
330151	150 ml	106 mm	75 mm	50 mm	33 mm	21.00 kg	5.070	5.070
330201	200 ml	110 mm	75 mm	59 mm	33 mm	24.00 kg	270	3.240
330251	250 ml	113 mm	78 mm	64 mm	45 mm	21.00 kg	220	2.640
330301	300 ml	113 mm	80 mm	69 mm	38 mm	37.00 kg	225	2.700
330401	400 ml	132 mm	91 mm	73 mm	38 mm	37.00 kg	1.980	1.980
340201	200 ml	110 mm	75 mm	59 mm	33 mm	24.00 kg	270	3.240
340251	250 ml	113 mm	78 mm	64 mm	45 mm	21.00 kg	220	2.640
340301	300 ml	113 mm	80 mm	69 mm	38 mm	37.00 kg	225	2.700
350040	40 ml	72 mm	53 mm	35 mm	22 mm	9.60 kg	700	21.000
350061	60 ml	70 mm	46 mm	38 mm	26 mm	11.00 kg	1.000	12.000
350075	75 ml	85 mm	55 mm	42 mm	28 mm	12.10 kg	775	11.625
350076	75 ml	83 mm	55 mm	42 mm	26 mm	11.00 kg	750	9.000
350080	75 ml	84 mm	57 mm	45 mm	33 mm	16.00 kg	650	9.750
350081	75 ml	84 mm	57 mm	45 mm	33 mm	16.00 kg	600	7.200
350101	100 ml	88 mm	56 mm	47 mm	33 mm	16.00 kg	545	6.540
350121	120 ml	95 mm	64 mm	49 mm	33 mm	19.00 kg	441	5.292
350151	150 ml	106 mm	75 mm	50 mm	33 mm	21.00 kg	370	4.440
350175	175 ml	99 mm	65 mm	57 mm	33 mm	24.00 kg	4.356	4.356
350176	175 ml	99 mm	65 mm	57 mm	33 mm	24.00 kg	350	4.200
350201	200 ml	110 mm	75 mm	59 mm	33 mm	24.00 kg	270	3.240
350251	250 ml	113 mm	78 mm	64 mm	45 mm	21.00 kg	220	2.640
350301	300 ml	113 mm	80 mm	69 mm	38 mm	37.00 kg	225	2.700
350401	400 ml	132 mm	91 mm	73 mm	38 mm	37.00 kg	175	2.100
350500	500 ml	138 mm	95 mm	78 mm	38 mm	37.00 kg	144	1.728
350501	500 ml	138 mm	95 mm	78 mm	38 mm	37.00 kg	140	1.680



PHACOTEC  
PRODUKT-SERVICE GMBH

AM PFEILSHOF 9 A  
22393 HAMBURG  
DEUTSCHLAND

350510	500 ml	138 mm	94 mm	78 mm	46 mm	54.00 kg	144	1.728
350625	625 ml	158 mm	116 mm	78 mm	38 mm	51.50 kg	1.288	1.288
350630	625 ml	158 mm	107 mm	80 mm	46 mm	54.00 kg	1.288	1.288
350750	750 ml	166 mm	110 mm	88 mm	46 mm	65.00 kg	102	1.530
350950	950 ml	180 mm	125 mm	92 mm	46 mm	74.00 kg	90	1.440

Dia (opening) = Diameter of opening with attached closure.  
Some items in this series not available from stock. Minimum quantities and delivery time on request.  
All dimensions  $\pm 1$  mm, information without guarantee!

GESCHÄFTSFÜHRER KARIN UND FELIX REHER  
GESELLSCHAFTSSITZ HAMBURG, DEUTSCHLAND  
REGISTERGERICHT AMTSGERICHT HAMBURG  
REGISTERNUMMER HANDELSREGISTER B 67718

FON +49 40 64 08 75 10  
FAX +49 40 64 08 75 199  
WEB WWW.PHACOTEC.DE  
MAIL INFO@PHACOTEC.DE