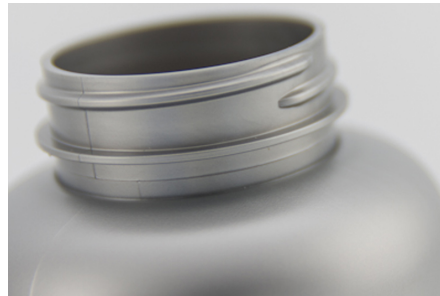


Data sheet

Series Round R-PET

Version 25_205_EN

Date 16.05.2025



ARTICLE



VOLUME



HEIGHT



ETIKETT



DIA TOTAL



DIA OPENING



WEIGHT / TSD



QUANTITY / KRT



QUANTITY / PAL

| ARTICLE | VOLUME | HEIGHT | ETIKETT | DIA TOTAL | DIA OPENING | WEIGHT / TSD | QUANTITY / KRT | QUANTITY / PAL |
|---------|--------|--------|---------|-----------|-------------|--------------|----------------|----------------|
| 330081 | 75 ml | 84 mm | 57 mm | 45 mm | 33 mm | 16.00 kg | 8.670 | 8.670 |
| 330101 | 100 ml | 88 mm | 56 mm | 47 mm | 33 mm | 16.00 kg | 7.168 | 7.168 |
| 330121 | 120 ml | 95 mm | 64 mm | 49 mm | 33 mm | 19.00 kg | 6.720 | 6.720 |
| 330151 | 150 ml | 106 mm | 75 mm | 50 mm | 33 mm | 21.00 kg | 5.070 | 5.070 |
| 330201 | 200 ml | 110 mm | 75 mm | 59 mm | 33 mm | 24.00 kg | 270 | 3.240 |
| 330251 | 250 ml | 113 mm | 78 mm | 64 mm | 45 mm | 21.00 kg | 220 | 2.640 |
| 330301 | 300 ml | 113 mm | 80 mm | 69 mm | 38 mm | 37.00 kg | 225 | 2.700 |
| 330401 | 400 ml | 132 mm | 91 mm | 73 mm | 38 mm | 37.00 kg | 1.980 | 1.980 |